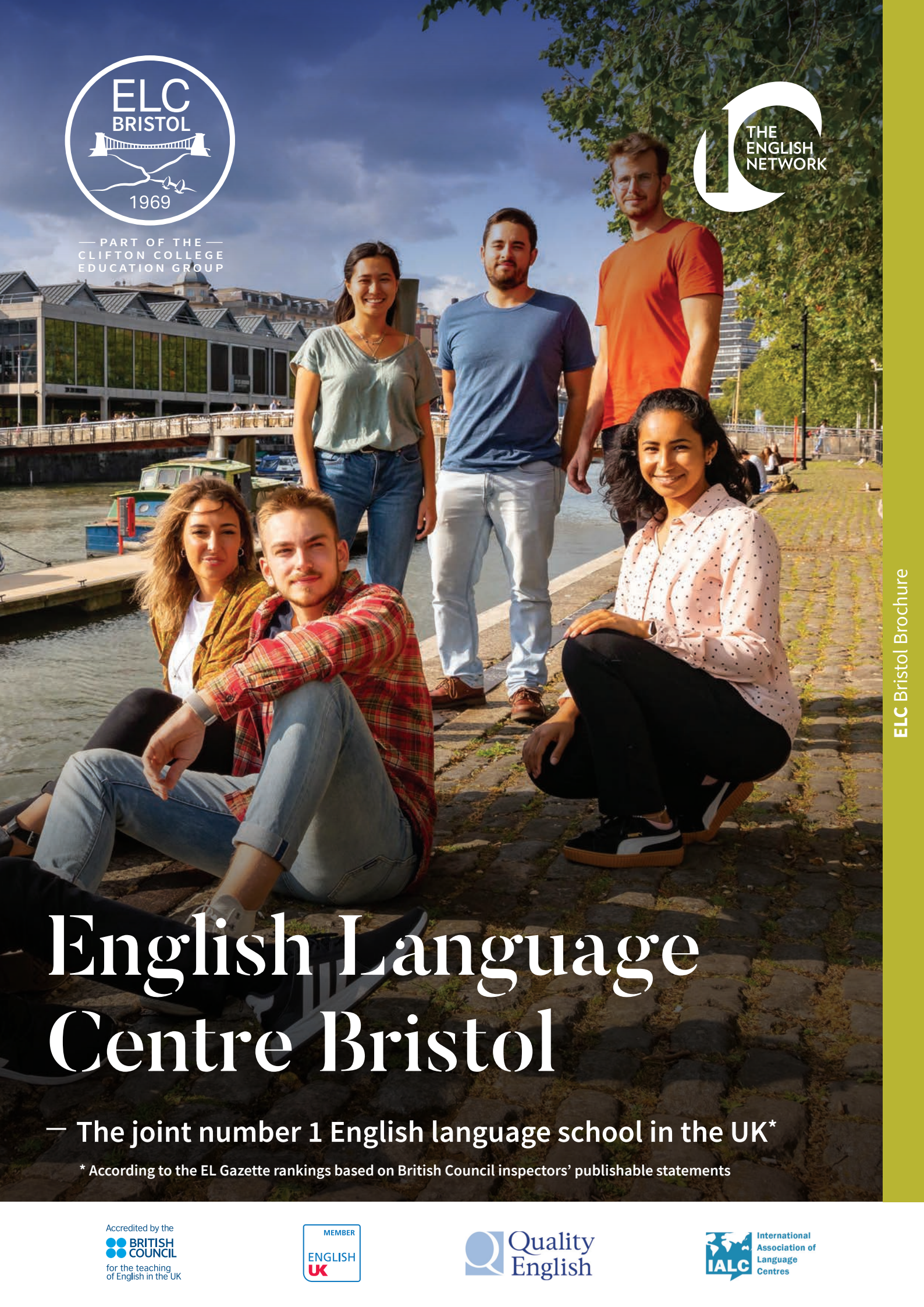




— PART OF THE —
CLIFTON COLLEGE
EDUCATION GROUP



English Language Centre Bristol

— The joint number 1 English language school in the UK*

* According to the EL Gazette rankings based on British Council inspectors' publishable statements





The school building, 1 The Avenue

The School

The English Language Centre Bristol offers intensive General English and Examination Preparation courses. We are accredited by the British Council for the Teaching of English in the UK. We are part of the Clifton College Education Group and members of IALC (International Association of Language Centres) and Quality English. The school is also a member of The English Network (TEN), a group of independent schools that share best practice and have a reputation for quality and personal service.

The school is located close to the University in Clifton, one of Bristol's most attractive areas.



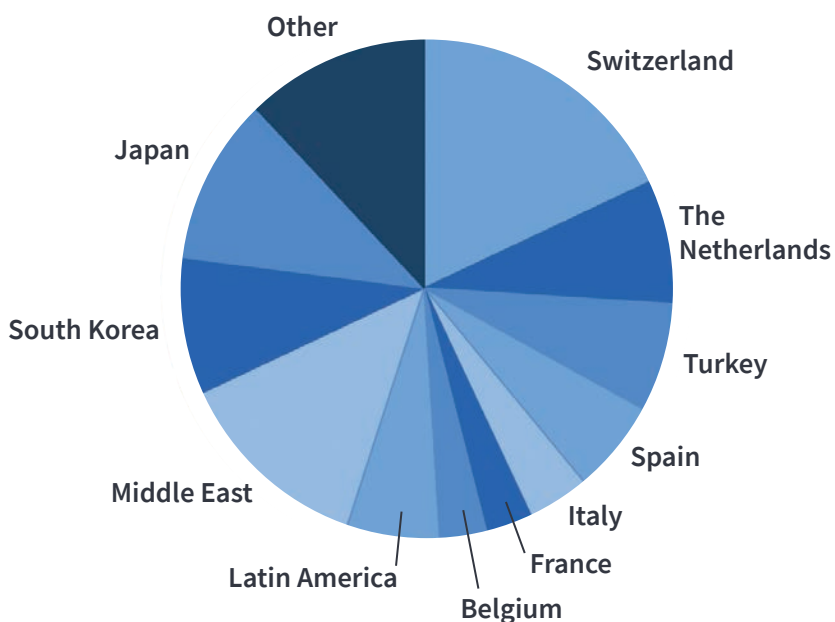
Andrew Edwards (Principal) and John Duncan (Director)

“We believe that personal care and attention are essential and we will do everything we can to ensure that your stay in Bristol is one of the most productive and enjoyable times of your life.”

Our Students

Student Nationalities 2022

Percentages fluctuate according to season



I've spent 6 months in ELC preparing myself for the First Certificate exam.

Bristol gave me the opportunity to meet amazing people and learn English with the best teachers.

The teachers are an example for the students, and they always try to find the best way to help us make progress every day.

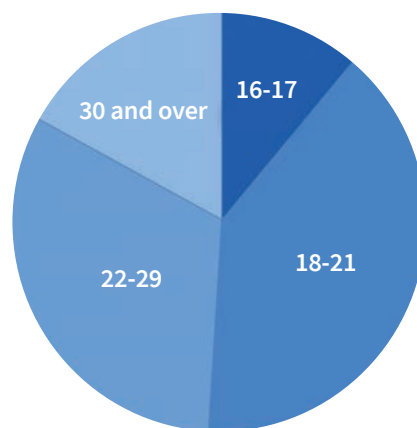
Hada from Spain



Student Ages 2022

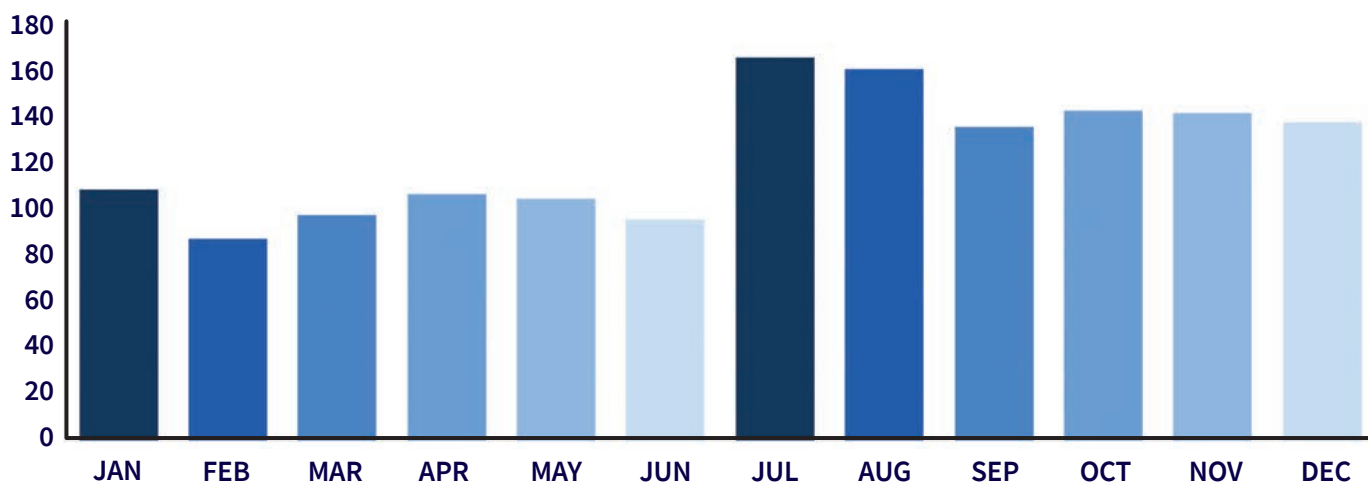
Average age: 23 Minimum age: 16

No maximum age



Weekly Student Numbers 2022

An average of 112 students per week from a total of 36 different countries





ELC students in front of the iconic Clifton Suspension Bridge

Bristol

With a population of around 450,000 and two major universities, Bristol is the second-largest city in the South after London, which is less than two hours away by train. Bristol is a lively student city, well known for its nightlife, theatres, shopping, music scene and street art.

The lively harbourside is popular with our students, and there is a wide choice of international restaurants in the city.

Bristol has all the attractions of a major city but it is easy to live here as most places of interest are located within walking distance, and you are not dependent on public transport.

Bristol hosts many festivals through the year. 250,000 people visit the city over the weekend of the Harbour Festival. There are several stages for live music, dance, acrobatics and performing arts. Other popular events are Bristol Pride, Upfest Foodies Festival and Bristol International Balloon Fiesta, the largest balloon gathering in Europe. There are more than 20 nightclubs within walking distance of the school and live music venues all over the city. Street art is very popular in Bristol and there are several Banksy pieces in the city.



Bristol Harbourside



Bristol Planetarium



Park Street



Banksy Street Art



Cabot Circus

TRAVEL AROUND THE UK & EUROPE

Bristol has major transport links and is conveniently placed for day trips to popular destinations like London, Bath, Oxford, Cardiff, Stonehenge and Windsor Castle.

Bristol International Airport has flights to over 100 destinations in more than 30 countries. As well as making it easy to get here, it offers our students a great opportunity to visit other European destinations.



Bristol International Balloon Fiesta



ELC students and teacher

Courses

- Courses include 21 full hours of classroom time per week plus daily homework.
- There are 7 levels from A2 (Elementary) to C2 (Advanced), with classes at most levels.
- On the first day, or the week before you arrive, we test you so that we can place you in a class at the right level.
- Average class size: 10. Maximum: 14.
- As part of your course, depending on your level, you can prepare for the Cambridge English First, Advanced and Proficiency exams, or Academic IELTS.
- Normal minimum enrolment: 2 weeks (General English), 4 weeks (exam preparation).

Levels

CEFR*	LEVEL	IELTS**	Cambridge Exam**	
A2	Elementary Pre-intermediate			Basic User
B1	Intermediate	4-5	Cambridge English: Preliminary (PET)	Independent User
B2	Upper-Intermediate	5 - 6.5	Cambridge English: First (FCE)	
C1	Pre-advanced / Advanced	6.5 - 8	Cambridge English: Advanced (CAE)	Proficient User
C2	Advanced +	8 - 9	Cambridge English: Proficiency (CPE)	

*Common European Framework

**Details of exam dates and fees are in the enrolment form



Break time in school

Included in the programme

- Personal study programme with 4 hours' optional supervised self-study per week.
- Course book every 3 months, supplementary teaching materials and a leaving certificate.
- E-learning service from the moment you enrol until 3 months after you leave.
- After classes have finished, optional free language activities are arranged regularly, such as Conversation Club, Job Club and Friday Film Club.

Sample timetable

28 Lessons (21 hours) a week

09:15 - 10:00	10:00 - 10:45	10:45 - 11:15	11:15 - 12:00	12:00 - 12:45	12:45 - 14:00	14:00 - 14:45	14:45 - 15:30	15:45 - 16:45
Grammar using a suitable, modern course book	Listening / Pronunciation practice - can include work in the multimedia centre	Break	Reading skills & vocabulary building	Speaking skills & vocabulary building	Lunch break	Monday & Wednesday Writing/exam practice Listening & study skills Tuesday & Thursday Speaking & pronunciation Listening & vocabulary At level B2 and above, subjects such as Business English, Music, Film and British Life and Culture may be covered on Tuesdays and Thursdays	Optional supervised self-study	



ELC teacher and students

Examination preparation courses

- Cambridge English: First (FCE), Advanced (CAE), Proficiency (CPE) and Academic IELTS.
- Minimum period of enrolment: 4 weeks.
- You should be at least B2 level before joining an Academic IELTS class or a Cambridge First Certificate class.
- 21 hours per week.
- You can take the IELTS or Cambridge exams in the local examination centres.

Academic IELTS – How long will it take?

You generally need an IELTS score of 6.5 before going to university or 5.5 if you wish to take a foundation or pre-sessional course. Based on our students' results, it takes around 12 weeks of full-time study to improve your IELTS score by 1 point.

	Pre-Intermediate	Intermediate			Upper-Intermediate		Pre-Adv. / Advanced			
Courses	General English	General English			Academic IELTS preparation					
CEFR level	A2	B1		B2	C1 / C2					
IELTS score		4.0	4.5	5.0	5.5	6.0	6.5	7.0	8.0	8.5
					↓		↓			
					University foundation / pre-sessional courses		University under-graduate, post-graduate and doctorate programmes			



Summer sports activities at Clifton College

Summer Courses

The summer courses are run in the same way as our courses throughout the year, with intensive General English and examination preparation available together with additional language activities and a varied and exciting social programme.

The courses include 21 full teaching hours per week plus daily homework.

During July and August we open an additional study centre in Clifton College with spacious classrooms, a beautiful garden and cafeteria.

The summer centre is located in Clifton College, 10 minutes' walk from the main school.

During the summer courses, you may be taught in the Summer Centre or the main ELC building.



Summer Centre Garden



Multi-Media Centre



Students at the Welcome Party

Social Programme

An exciting social programme is arranged every week of the year. It includes regular sports, a minimum of two evening activities a week and a weekend excursion.

The programme is organised by our teachers and is a great way to see the country, explore the local area, make new friends and practise your English.

Free Activities

Could include: School Parties, Film Club, Conversation Club, Banksy Street Art Trail, Bristol Balloon Fiesta, Bristol Harbour Festival.

Paid Activities*

Could include: American Pool and Darts (£6), Opera/Ballet at the Hippodrome (£13-17), Laser Fusion (£10), Golf (£9), Bowling (£10), Salsa (£4), Harbour Cruise (£10), SS Great Britain (£12), Paintball (£25), live music (£15-20)

Weekend Excursions*

Could include: London (£25), Oxford (£22), Bath & Roman Baths (£27), Stonehenge, Avebury & Salisbury (£35), Cambridge (£27).

*Prices may vary at time of booking



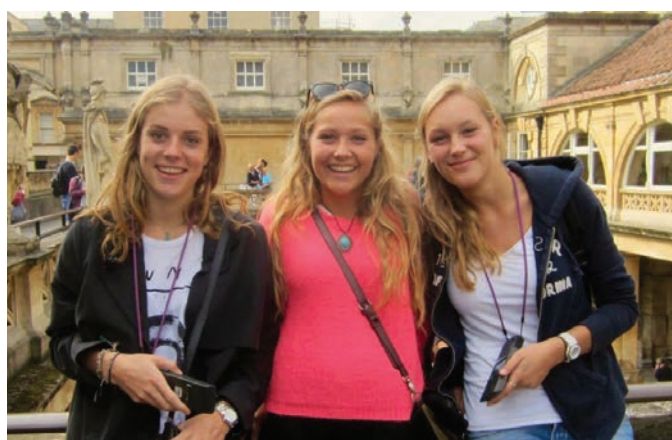
Excursion to Oxford



Excursion to London



Excursion to Longleat



Excursion to Bath



Excursion to Stonehenge

Bristol University Students' Union and Clifton College

With more than 50,000 students, Bristol is well-known for its nightlife and music scene.

A special advantage for ELC students is that, if you become an Associate Member of the Students' Union, you can join many of the University Students' Union clubs and societies during the academic year - a great way to make English-speaking friends!

For a one-off fee of £10, you can have free use of the Clifton College Gym and Swimming Pool as often as you like without paying extra. You can also play badminton and table tennis.





SS Great Britain



Mountain Biking



Clifton College Gym



Football with the teachers



Oxford Fun Run



Clifton College Swimming Pool



Bristol's great nightlife and music scene



Homestay family and ELC students

Accommodation

- Almost all of our accommodation is located within walking distance of the school.
- ELC Bristol is in Clifton, one of the most attractive parts of the city.
- We arrange the accommodation ourselves and don't use an agency.
- 55% of our students live in homestays, 35% live in independent student houses and apartments and 10% find their own accommodation.

Homestay

Homestay accommodation includes bed (single room), breakfast and an evening meal.

Staying with one of our homestays is the best way to experience the British way of life.

The average time to walk to school is 20 minutes. During July and August, and sometimes during the year, we occasionally place students with families who live outside our normal catchment area. These students may have to take a short bus ride to come to school (maximum 15 minutes).



Homestay Student Bedroom

If you choose to travel by bus, the cost of a weekly bus pass is currently £17.70 via the First Bus app with an ELC Bristol student card. (Cost subject to change).



St John's House

Self-Catering Houses & Apartments (18+)

Self-catering accommodation is very popular at ELC Bristol. Some students like to be independent and cook for themselves instead of living with a homestay family.

In self-catering accommodation, you will be living with other students from the school in student houses, smaller apartments or our larger student residences. All of our self-catering accommodation is within 25 minutes' walk of the school.

Summer University Residence (18+)

This self-catering residence is located just 5 minutes from the harbourside and 30 minutes on foot from school or an easy 10-minute journey by bus.

Flats are shared only with other ELC students, who are aged 18 or over. All rooms are en suite.

The residence has a student lounge with pool table, table football, large screen TV, table tennis, quiet study room and on-site bike storage.

Young Adult Summer Residence (16-17)

All rooms are fully-furnished lockable study bedrooms arranged in flats shared only with other ELC students under 18, plus the Residence Managers. The bedrooms are fully en suite. This residence is half-board, with breakfast provided in the residence and dinner in a local international restaurant daily.

The residence has a student lounge with pool table, table football, large screen TV, table tennis, quiet study room and on-site bike storage.



Summer Residence Reception Area



Summer Residence Student Bedroom

Job Club (subject to demand)

- Bristol is a relatively wealthy city and, if you have the right to work, it is quite easy to find part-time work here.
- Students with a Tier 5 Youth Mobility Scheme visa have the right to work in the UK.
- ELC runs a free Job Club giving advice and the language needed to help you find casual and part-time employment.
- ELC Bristol is able to put you in contact with a company which organises professional internships in Bristol and other cities including London, Oxford and Brighton.



Testimonials



The experience at ELC is not only an opportunity to improve one's English and to have fun, but also an insight into other cultures. The presence of students from all over the world makes the school a door which opens to the world and opens chances to experiences that are uncommon to live otherwise.

I'm really glad to have had such experience here.

Lorenzo from Italy



This is my fifth month at ELC Bristol. I feel it is like a big family. All of the staff are very kind and patient to listen to our poor English.

And each class has students from different nationalities, so we can communicate with many people and experience different cultures.

By the way we can also use the gym and swimming pool, which is great.

Julie from Taiwan



ELC is like my family in the UK. When I arrived at ELC 8 months ago I was an elementary student - I am now applying to University and hope to get a 6 on my IELTS. I love the classes as there is a great balance between formal study and activities, which has really helped, especially with my speaking. All

the teachers and staff have been really kind and very helpful. It is so easy to speak to them and they are always happy to help if you ever have a problem.

Mu from Saudi Arabia



I've spent the last 6 months here in ELC and I'm very happy that I chose to stay here in ELC. I could improve my English and I am very thankful to my teachers. I'm staying with a British family and I couldn't ask for a better homestay. This family is very kind and helpful. I really like the food in my

homestay. They took good care of me and treated me like their family member and that's why I felt so comfortable there. I am very thankful for this amazing experience I've met so many nice people all over the world and spent a great time with them. This is an unforgettable experience in my life.

Liya from Switzerland





Why study at ELC Bristol

Number 1

It is the joint number 1 English language school in the UK according to the EL Gazette's rankings, based on the British Council inspectors' publishable statements.

Teachers

Our dedicated teachers have an average of more than 18 years' teaching experience and an average of 9 years teaching at ELC Bristol.

Accommodation

Most of our accommodation and many attractions are within walking distance of the school.

Social Life

Bristol is a lively university city and our students can join many of the Student Union's clubs and societies - a great way to make English friends.

Bristol Airport

Bristol International Airport has flights to over 100 destinations in more than 30 countries, so it is easy to get here and a big advantage if you want to visit other European cities. Bristol is also well located for day trips to London, just 1 hour 40 minutes by train.



A message from John and Margaret

We would love to welcome you to ELC Bristol. It is a family-run school which prides itself on caring for each individual student. If you come, our team of dedicated teachers and staff will do everything they can to ensure that you have one of the most enjoyable and productive times in your life.

John and Margaret

How to get here

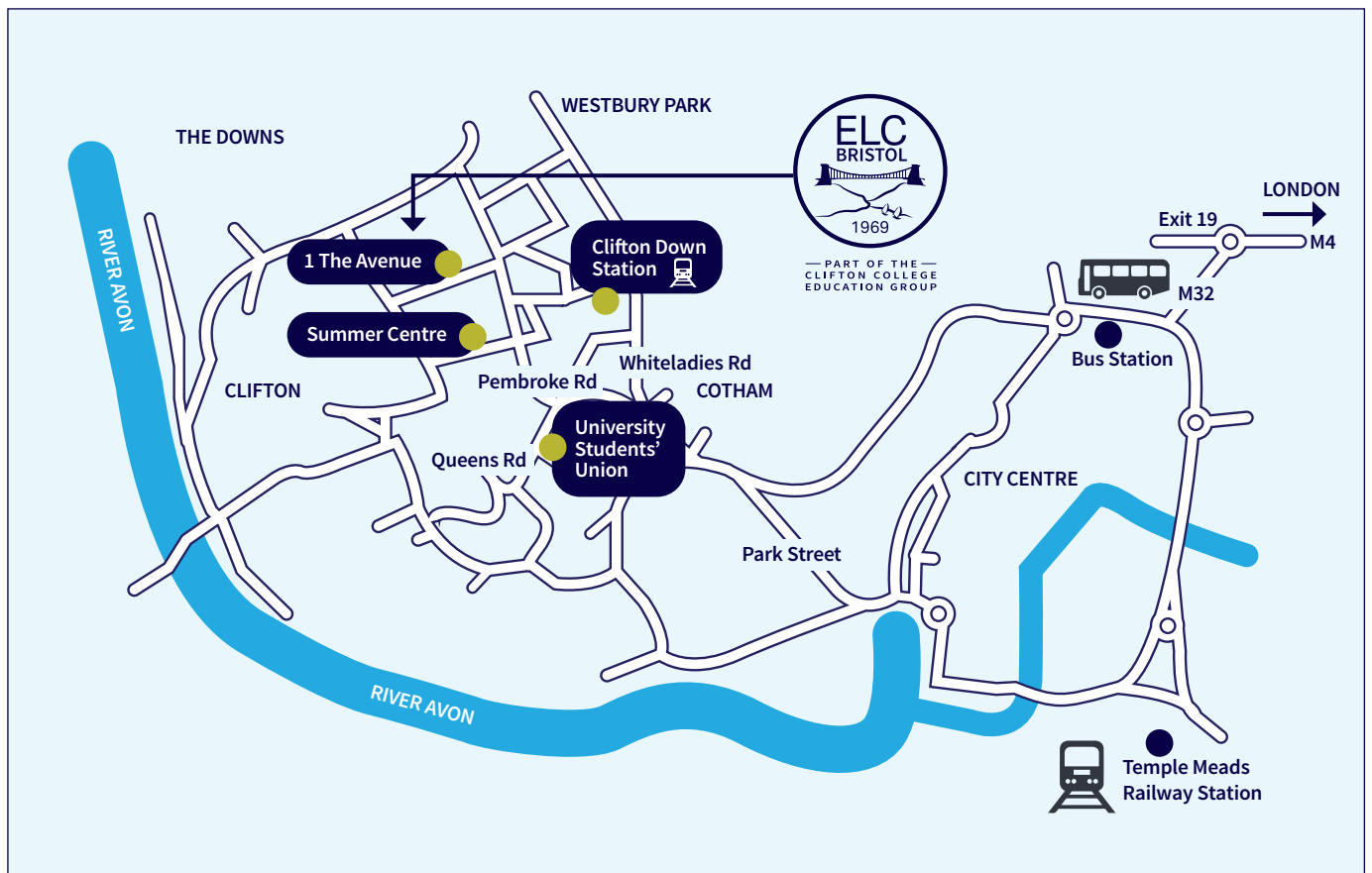
From Bristol Airport
25 minutes



From London Heathrow
2 hours



From London Paddington
1 hour 40 minutes





— PART OF THE —
CLIFTON COLLEGE
EDUCATION GROUP

ELC Bristol Ltd.

1 The Avenue,
Bristol BS8 3HG

Tel: +44 117 970 7060

info@elcbristol.co.uk | www.elcbristol.co.uk

Reg No: 14119797 (Registered in England)